



### 300x320 SHI-LR 27x0,9

	0°	45°	60°	45°	60°	$\frac{b}{a \times b}$
	300	300	200	270	x	x
	180*	110*	80*	110*	x	x
	320x290	300x280	190x200	270x200	x	320x160

				
3x400V 50 Hz	2,4	20-100	3660x27x0,9	650

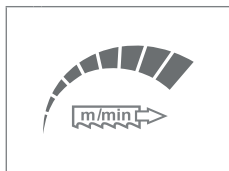
<b>L</b>	<b>B</b>	<b>Hmin</b>	<b>Hmax</b>	<b>V</b>
2050	1170	1420	2040	800



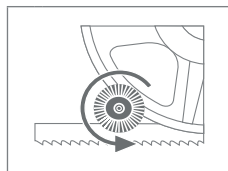
300x320  
SHI-LR

OPTION  
STANDARD

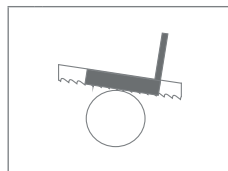
300-F



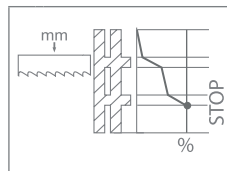
300-PCK



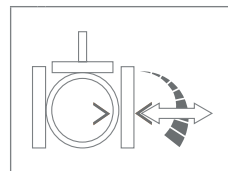
300-DPP



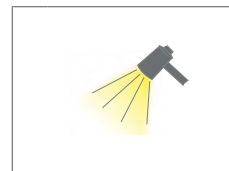
PEGAS-BRP



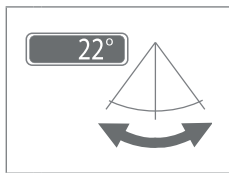
300-RTS



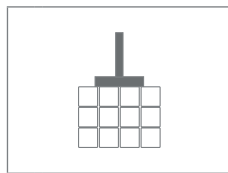
LIGHT L1



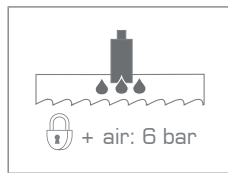
300-PUD



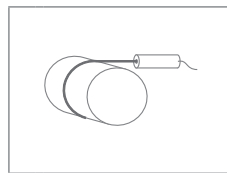
300x320-HP



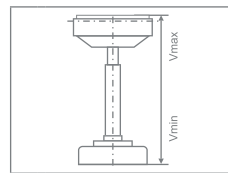
MINI LUBE 27-34



LASER LINE



R 390



	S (mm)	Vmin (mm)	Vmax (mm)
R	390	760	980

RB 200



RBS 200/390 +RB



RHS 390 +RBS+RB



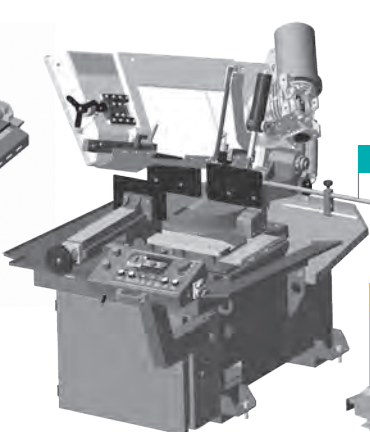
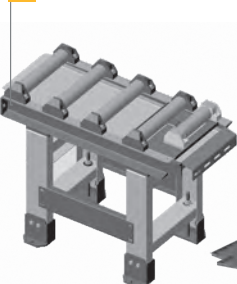
OZD 1000  
OZD 2000  
OZD 3000  
OZD 4000  
OZD 5000  
OZD 6000

OZ 1000  
OZ 2000  
OZ 3000  
OZ 4000  
OZ 5000  
OZ 6000

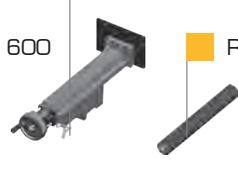
OZ 0000



300x320-RDP 1000/350



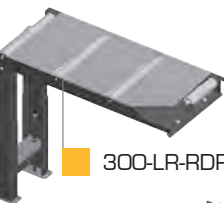
300-SRZ



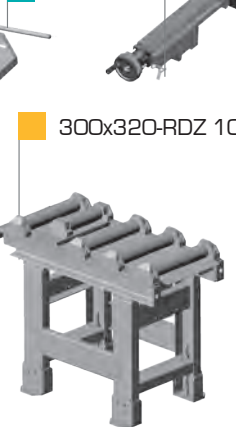
300x320-V



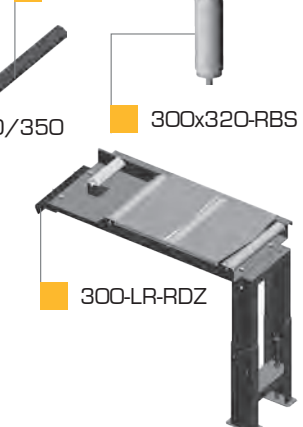
300x320-RB



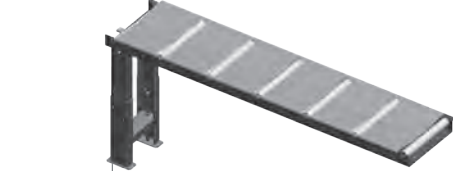
OZM 600



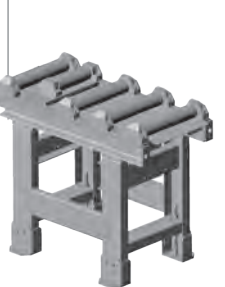
RD VR-390



300-LR-RDP



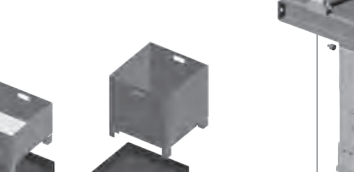
300x320-RDZ 1000/350



300x320-RBS



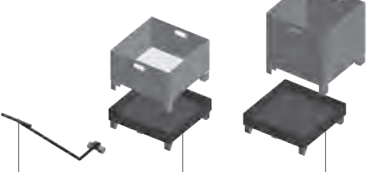
RD 2000/390



300-LR-RDZ



RDN



BOX-TAH

BOX-TRI

BOX-PCS

300x320 RDT 2000/350

300x320 RDT 1000/350

RD 1000/390



## 300x320 SHI-LR

- výrobce si vyhrazuje právo provádět změny technických údajů, technické údaje odpovídají 1.1.2021 / producer has the right to make changes of technical data, technical data are valid on 1.1.2021

- pila na fotografii není vždy v základním provedení, uvedené rozměry odpovídají stroji v základním provedení / the machine in the picture is not always in the basic version, mentioned diameters are for machine in basic version

\* doporučená hodnota. Při překročení doporučeného maximálního průměru není možné garantovat výkon pilového pásu! / recommended value. The blade performance cannot be guaranteed when the recommended diameter is exceeded!

- řezání svazků bez horního přitlaku / cutting of the bundle without top clamping

CONTROL PANEL: MITSUBISHI



PEGAS - GONDA s.r.o.  
Čs.armády 322, 684 01 Slavkov u Brna,  
CZECH REPUBLIC

www.pegas-gonda.cz  
00420-544 221 125 (126) | pegas@gonda.cz