

MACHINE MODEL

BS 300 PLUS SHI

Semiautomatic bandsaw for small, medium production

Short description

BS 300 PLUS SHI is the semiautomatic bandsaws intended to cut both left (up to 60°) and right (from 0° to 45°). The machine is a suitable working tool for small and medium batch production for mechanics and steelwork.

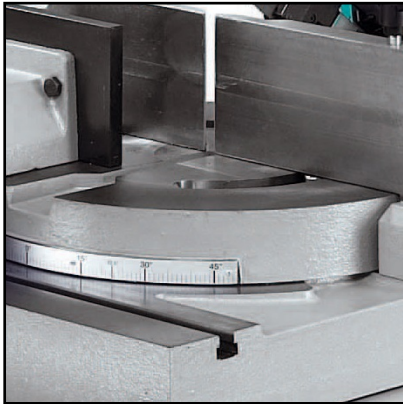


Scan the video



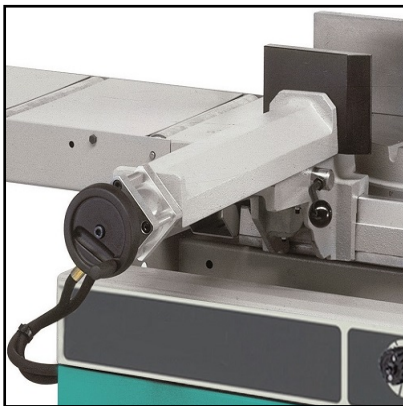
Cutting capacity at 90°	Round 255 mm. Square 230 mm. Rectangular 300x180mm
Cutting capacity at 45° right	Round 210 mm. Square 190 mm. Rectangular 200x180mm
Cutting capacity at 45° left	Round 180 mm. Square 160 mm. Rectangular 180x100mm
Cutting capacity at 60° left	Round 135 mm. Square 110 mm. Rectangular 130x100mm
Cutting capacity with bundle device	250x130mm - 85x10mm
Maximum capacity for full materials	180mm
Blade size.	2765x27x0,9
End-cutting bandsaw inclination	3°
Blade motor	1,5/1,8 kw
Blade speed	35/70 - 15÷110 m/min
Hydraulic unit motor power	kw 0,37
Hydraulic unit tank	Lt 12
Coolant tank	Lt 20
Size - Weight	1230x1700x1750 mm - 412kg
Working table height	940 mm

Features



Wide working area

BS 300 PLUS is equipped with a wide diameter working area and a system of automatic easy stops at 0°, 45° and 60° left and 45° right with graduated plate to identify and set different angles.



Opening vice

The vice has adjustable guides, free to move alongside the worktable, with rapid approaching and clamping.



Rigid sawframe

Machine sawframe is rigid cast-iron with tubular section, 320 mm pulleys, high blade tension at 1700 kg/cm² and to avoid an excessive strain on the blade with frontal regulation and microswitch controller.



Blade protection

A carter protect the blade, allowing to have easy access for maintenance when needed; a system with blade guides with hard pads, additional lateral bearings provides for the perfect alignment of the blade



Easy to use

Safe starting through the button on the handle with warning light to inform the use about the correct machine functioning. Coolant-tank and electropump are placed inside the floor stand.



Electronic inverter (Optional) ESC

If required, the electronic inverter for variable blade speed allows the operator via keyboard to adjust the machine to be able to cut a wide range of materials and different sections. The change of speed is via inverter and it does not affect the power of the engine even at low speeds.



Minimal lubrication system (Optional)

OPTIONAL

It is possible to require, for all Imet machines, the minimal lubrication system, it avoids the dispersion of refrigerant liquid typical in the use of emulsifiable oil, the life of the blade is not in any way affected.



Adapter to synchronize RTP/RTD (Optional)

OPTIONAL

Adapter to synchronize the RTP/RTD table with sawframe motion



Laser ray (Optional)

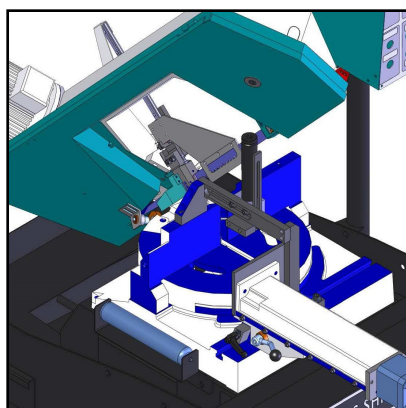
OPTIONAL



Pressure reducer (Optional)

OPTIONAL

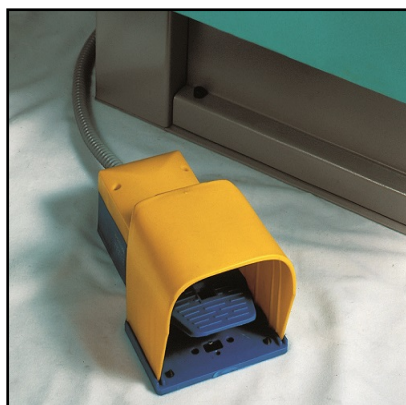
Pressure reducer for hydraulic vice (only for SHI version)



Hydraulic device for bundle cutting (Optional)

OPTIONAL

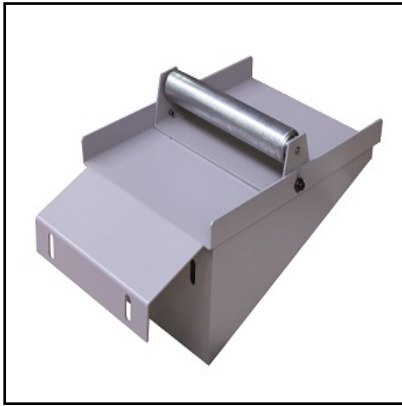
Only for SHI version, hydraulic device for bundle cutting (Max 250x130mm - Min 85x10mm).



Foot pedal (Optional)

OPTIONAL

Foot pedal with 3 m long cable (only for SHI version).



Connection element for unloading table (Optional) OPTIONAL

Connection element for unloading table equipped with 1 roller and a slide to collect coolant.



Loading/unloading table - first element (Optional) OPTIONAL

Loading/unloading roller table, first element, 2 m long, maximum capacity 700kg



Loading/unloading table - following element (Optional) OPTIONAL

Loading/unloading roller table, 2m long, following element, maximum capacity 600kg



Unloading roller table with metric rod (Optional) OPTIONAL

Unloading roller table with metric rod and length stop, 1st element, 2m long, maximum capacity 700kg



Unloading roller table with metric rod (Optional) OPTIONAL

Unloading roller table with metric rod and length stop, following element, 2m long, maximum capacity 600kg.



Unloading table with digital reading (Optional) OPTIONAL

RTD2LW30 - unloading table with digital reading and manual positioning, measurement length 2m, capacity 700kg
RTD4LW30 - unloading table with digital reading and manual positioning, measurement length 4m, capacity 1300kg
RTD6LW30 - unloading table with digital reading and manual positioning, measurement length 6m, capacity 1900kg



Unloading table with motorized length stop (Optional) OPTIONAL

RTP3W30 - Unloading table with motorized length stop and selection of the lengths via keyboard, 3m, 1300kg. RTP6W30 - Unloading table with motorized length stop and selection of the lengths via keyboard, 6m, 1900kg.



Pair of vertical roller (Optional) OPTIONAL

Pair of vertical rollers 300 mm made in steel, max 2 pairs for each element 2m long. To use without rollers covers.